

April 2024 edition

For those who are considering to establish new business in Kuwana

Welcome to KUWANA!!



本物力こそ桑名力

Would you like to make great strides in your business based in Kuwana City ?

Kuwana City Hall

Business Attraction Division

Tel :+81-594-24-1256

Mail:kigyom@city.kuwana.lg.jp

Table of contents



本物力こそ桑名力

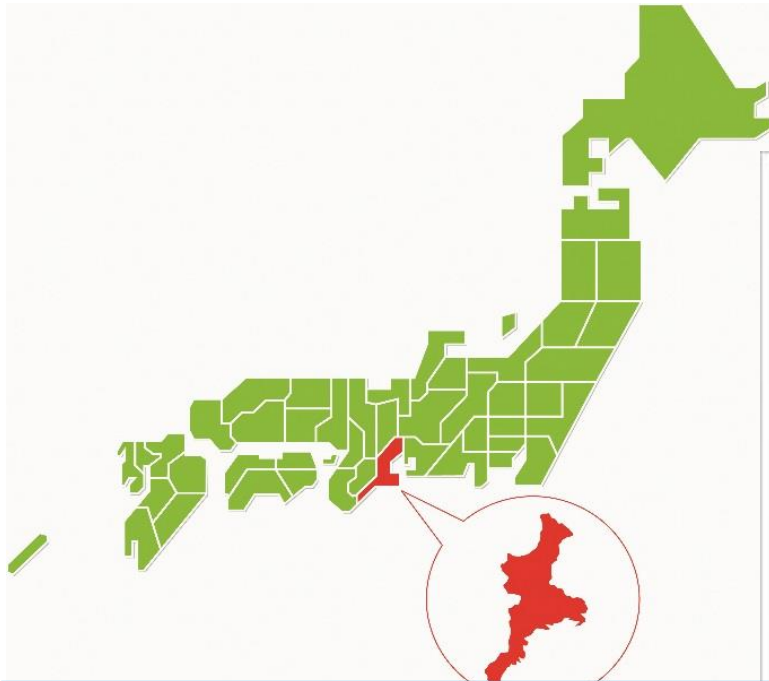
1. Introduction of Kuwana City
2. The advantages of Kuwana City
3. Comprehensive business location support system
4. Promoting businesses location in Kuwana



1. Introduction of Kuwana City



本物力こそ桑名力



"Our City" Kuwana



- Kuwana City, Nagashima Town, and Tado Town merged in 2004 to form the current Kuwana City.
- Population : 138,963 (Working-age population: 84,049)
- Area : 136.65 km²

As of the end of January 2024



1. Introduction of Kuwana City

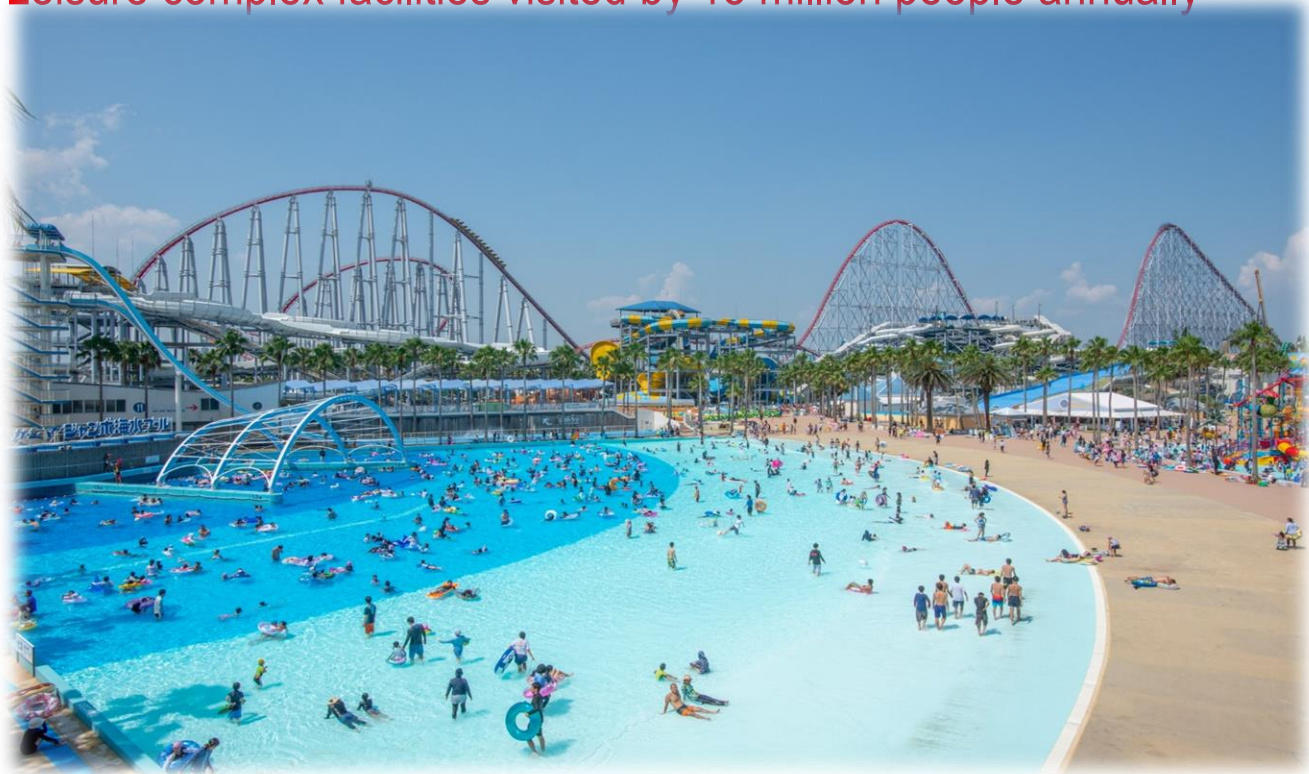


本物力こそ桑名力

「City of Sightseeing」 Kuwana

Nagashima Resort

Leisure complex facilities visited by 15 million people annually



1. Introduction of Kuwana City

「City of Food」Kuwana

Clams(Hamaguri)



本物力こそ桑名力



1. Introduction of Kuwana City



本物力こそ桑名力

「City of Culture」 Kuwana

Ishidori Festival

The resonating sounds of the beating of so many taiko drums and gongs is said to make Ishidori Festival "Japan's noisiest festival". Designated as UNESCO Intangible Cultural Heritage.



1. Introduction of Kuwana City



本物力こそ桑名力

「City of History」 Kuwana

Tadakatsu Honda, the first lord of the Kuwana domain is said that he is one of the strongest samurai lord.



United Semiconductor Japan Co., Ltd. employee photo

2. The advantages of Kuwana City



本物力こそ桑名力

【Great location with high accessibility in transportation】

Well-developed highway network!
5 interchanges (highway exit)
About 30 minutes to Nagoya



- High Convenience !
- About 20 minutes to Nagoya
- 4 railway lines: “JR Line, Kintetsu Line, Yoro Line, Hokusei Line”



Access not only to Nagoya, but also to the Kanto and Kansai regions is outstanding.
About 70 minutes to Osaka, about 120 minutes to Tokyo

2. The advantages of Kuwana City

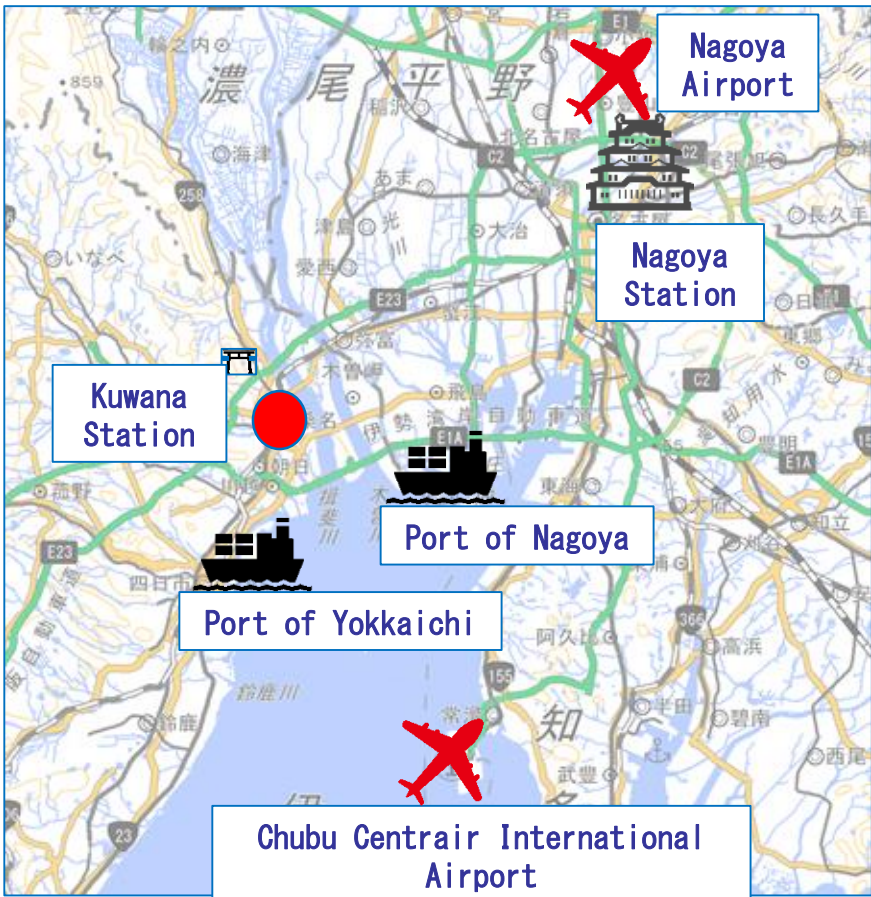
Reasons for choosing Kuwana

- ① Cost advantages
- ② Business benefits
- ③ Convenience of transportation
- ④ Low risk of natural disaster occurrence and damage
- ⑤ Employment advantages



City with the 5 Best criteria for selecting candidate relocation sites

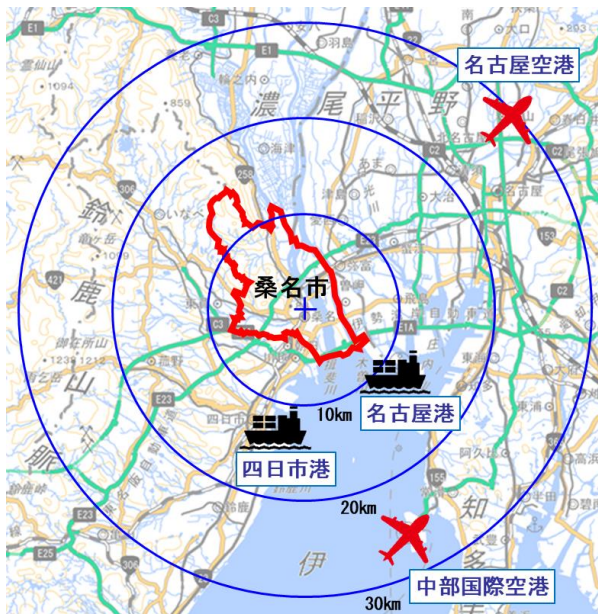
2021, Trend Survey on Regional Relocation Kanto Bureau of Economy, Trade and Industry)



2. The advantages of Kuwana City

Within 20km
of Kuwana City

3.2 million people live
1.86 million people work
160,000 offices



10 km圏内の市町村

県名	市町村名	人口	従業員数	事業所数
三重県	桑名市	139,563	59,620	5,551
	東員町	25,934	11,497	869
	川越町	15,535	8,667	627
	朝日町	11,106	4,201	296
	木曽岬町	5,994	3,280	250
愛知県	愛西市	61,618	17,830	2,012
	弥富市	43,861	22,293	1,826
合計		303,611	127,388	11,431

20 km圏内の市町村

県名	市町村名	人口	従業員数	事業所数
三重県	四日市市	309,719	156,918	12,006
	いなべ市	44,797	29,157	1,803
	菟野町	41,283	15,725	1,415
愛知県	名古屋市	2,294,854	1,450,337	117,344
	あま市	88,787	25,499	2,529
	清須市	69,194	28,969	2,517
	蟹江町	37,144	13,688	1,418
	大治町	33,356	8,613	911
	飛島村	4,657	11,606	723
	岐阜県	津海市	32,582	1,468
合計		2,956,373	1,741,980	153,587

※Ministry of Internal Affairs and Communications: Population, demographic trends, and number of households based on the Basic Resident Register (as of January 1, 2023)

※ Data from the “2022 Economic Census”

2. The advantages of Kuwana City



本物力こそ桑名力

Steel industry

1st

in the prefecture

41.0 billion yen

Commercial machinery and equipment manufacturing industry

2nd

in the prefecture

34.5 billion yen

Manufacture of general machinery and equipment

2nd

in the prefecture

73.5 billion yen

Electronic Components, Devices and Circuits Manufacturing

3rd

in the prefecture

71.5 billion yen

※ Data from the "2022 Economic Census"

2. The advantages of Kuwana City



本物力こそ桑名力

Healthy life expectancy

1st

City in the prefecture

Male: 79.9 years old

Female: 82.4 years old

※Data from "Mie Prefecture"

A convenient and comfortable place to live

Number of (municipal) library visitors

1st

in the prefecture

365,877 people

※Data from "Mie Prefecture"

Wholesale / Retail Annual Merchandise Sales

6th

in the prefecture

277 billion yen

※ Data from the "2022 Economic Census" 11

2. The advantages of Kuwana City

2023 National Academic Achievement /
Learning Status Survey
【National Assessment of Academic Ability】

3rd grade student of junior high school



Subject	Kuwana City	Japan	Mie Prefecture
National language	71 %	69.8 %	69 %
Math	57 %	51 %	51 %
English	51 %	45.6 %	45 %

*From "Ministry of Education, Culture, Sports, Science and Technology "

All subjects are above average!

We have a high educational environment



3. Comprehensive business location support system

Generous support for companies locating to Kuwana City

**One-stop
Service**

A service that can be completed at
a single point of contact

**Substantial
Support
System**

We provide full support!



3. Comprehensive business location support system

I've been going from one office to another, but I can't seem to get through the process.

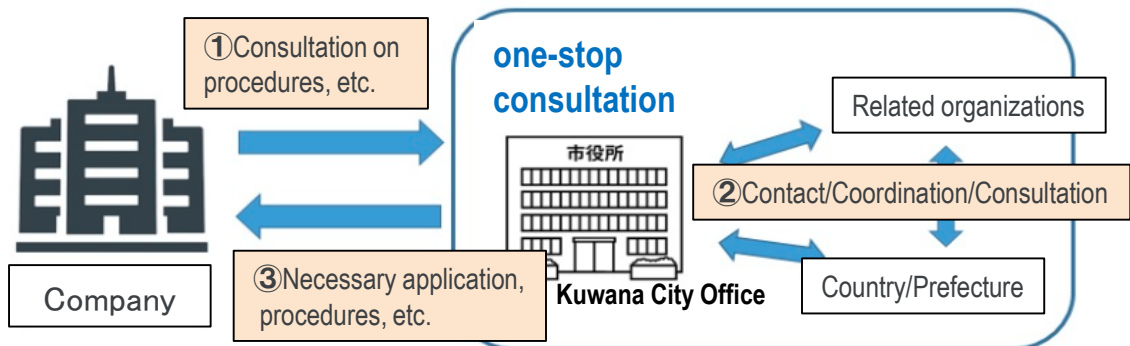
Is my company eligible to receive the subsidy of Kuwana City?

City hall applications and procedures are complicated and incomprehensible.

Have you ever experienced something like this?

To solve...

Business Attraction Division provides one-stop consultation.



3. Comprehensive business location support system



本物力こそ桑名力

We support businesses to reinvest or to set up new locations in Kuwana City.

★Incentive for location: A subsidy for up to 300 million yen!

Issued to "newly expanding companies" and "capital investment accompanying the expansion of offices, etc."

★Incentive to promote residence in Kuwana City:

A subsidy for up to 100 million yen!

Issued to newly hired employees or newly relocated permanent employees who have their address in the city.

★Incentive for establishing lodging facilities:

A subsidy for up to 300 million yen!

Issued to accommodation facilities newly established in the city.



3. Comprehensive business location support system

Location incentive

Support for companies

Incentives are granted for capital investment involving “new construction,” “expansion,” and “relocation.”

Incentive amount

1st year

100 % of property tax

2nd year

75 % of property tax

3rd year

50 % of property tax

※ Maximum grant payment is 100 million yen per year.

Eligible facilities

- The manufacturing industry, and plant factories
- Research facilities
- Information processing facilities
- Accommodation facilities

※ Location must be within the designated area.



3. Comprehensive business location support system

Support for
workers

Settlement promotion incentive

Incentives are issued to “newly hired employees” and “newly transferred employees (permanent)” who live in Kuwana City so that they can live in Kuwana City for a long time.

Incentive amount

300,000 yen/person

The upper limit for one year is 50 million yen

Eligible persons

- Newly employed workers residing in Kuwana
 - or
 - Newly transferred employees residing in Kuwana
- ※Continued employment of 1 year or longer is required



3. Comprehensive business location support system

Accommodation incentive

Support for
companies

In order to promote the establishment of new accommodation facilities in the city, incentives are issued to these facilities.

Incentive amount

10% of acquisition amount

(Up to 100 million yen)

Requirements

- Construction area of 1,000 m² including a convention hall (Floor area of 350 m² or more)

or

or

Standard room area 40m²

- Standard guest room area 20m²

※Target period: From October 2, 2019 to March 31, 2025

4. Promoting businesses location in Kuwana

(Industrial Park subdivision status)



本物力こそ桑名力



Under sale

①	Tado Town Oyama Land Readjustment Project Enforcement area: 35.9 ha	Oyama, Tado Town
---	--	------------------

Under development

②	Chikarao-Tobu-Kogyodanchi (Expansion) Enforcement area : 9.9 ha	Mizono, Tado Town
③	Mizono-Nanbu-Kogyodanchi Enforcement area:13.4 ha	Mizono, Tado Town

Under development plan

④	Tado-Nanbu-Kogyodanchi Enforcement area: about 68.9ha	Mizono/Chikarao, Tado Town
⑤	Harima-Seibu-Kogyodanchi Enforcement area: about 66ha	Harima, Kuwana City
⑥	Chikarao-Hokubu-Kogyodanchi Enforcement area: about 13ha	Chikarao, Tado Town

In operation

A	Tado-Kogyodanchi
B	Tado-Dai2-Kogyodanchi
C	Tado-Industrial-Park
D	Kuwana-Business-Research-Park
E	Tech Base Kuwana
F	Tado-Dai3-Kogyodanchi
G	Chikarao-Tobu-Kogyodanchi

A plan to create approximately 147.9ha is underway by a private company.

4. Promoting businesses location in Kuwana (Industrial Park subdivision status)



Tech Base Kuwana



Kuwana-Business-Research-Park



Tado-Kogyodanchi



Tado-Dai2-Kogyodanchi

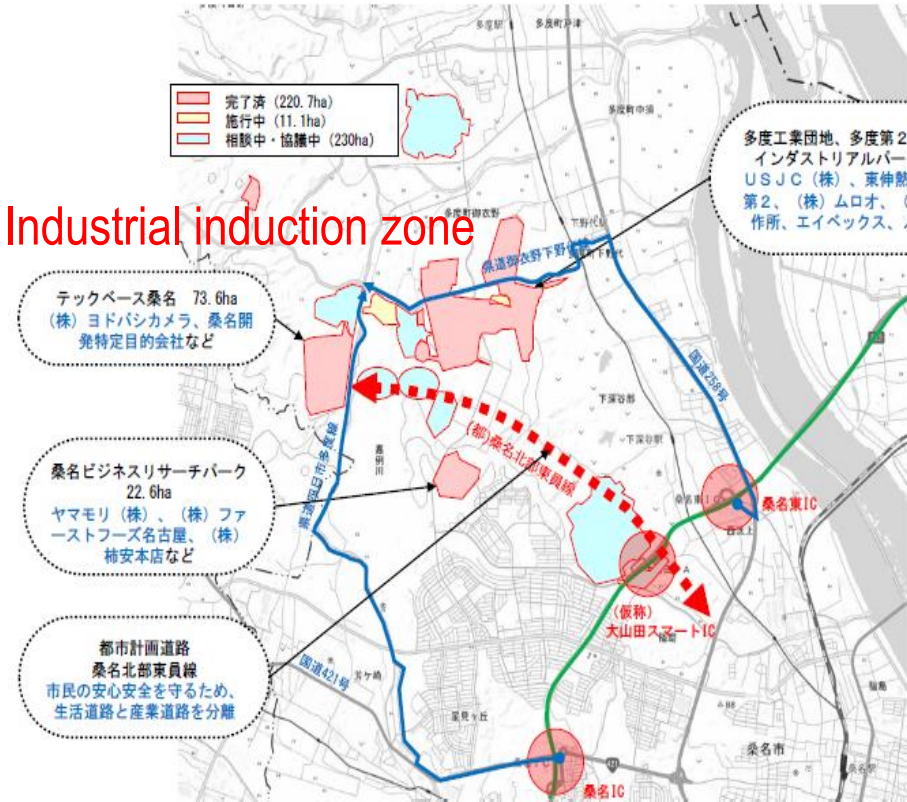
4. Promoting businesses location in Kuwana (Oyamada smart interchange concept)



本物力こそ桑名力

Industrial induction zone

- 完了済 (220.7ha)
- 施行中 (11.1ha)
- 相談中・協議中 (230ha)



A smart interchange is one of the functions of highways in Japan. It is a simple interchange exclusively for ETC-equipped vehicles that is installed so that you can enter and exit from the existing facilities of the highway to the general road.

Reduces access time to industrial induction zones

Improving the convenience of commuting to work or school

Access to the interchange without fear of flooding

The new smart interchange is expected to further enhance corporate activities.

Kuwana City is blessed with beautiful nature, rich in history and culture, and a comfortable place to live and work!

High-speed transportation networks, including smart interchanges, are being developed, and further development is expected!

In Kuwana City, we offer one-stop support for the company operation and the lives of employees in Kuwana City, with the slogans “Let’s operate in Kuwana City!” and “Let’s raise children in Kuwana City!”

We hope that you will consider Kuwana City as a potential location for your new business development.



Kuwana City will promote "attracting companies" in order to play a role in the creation of a city where citizens can realize happiness that matches their individual wishes.